

Electronic Control PC and PDA Software User Instructions



Part No. 12-08-278R5
February 2012

License Agreement

By installing this software you agree to the following provisions. If you do not agree with these provisions, return the software and all materials included with the software within thirty (30) days.

This is a license agreement and not an agreement for sale, Alliance Laundry Systems LLC (hereinafter "Alliance Laundry Systems") hereby licenses this software to you under the following terms and conditions.

This agreement supersedes all prior agreements, proposals, and representations between you and Alliance Laundry Systems regarding all Alliance Laundry Systems Software products.

Customer agrees that aspects of the licensed materials, including the specific design and structure of individual programs, constitute trade secrets and/or copyrighted material of Alliance Laundry Systems. Customer agrees not to disclose, provide, or otherwise make available such trade secrets or copyrighted material in any form to any third party without the prior written consent of Alliance Laundry Systems. Customer agrees to implement reasonable security measures to protect such trade secrets and copyrighted material. Title to Software and documentation shall remain solely with Alliance Laundry Systems.

STANDARD USE LICENSE

YOU MAY:

- Use this software on any compatible computer, provided the computer is owned by you the licensee. This includes computers located in branch offices that support and manage laundry equipment.

YOU SHALL NOT:

- Use, copy, or transfer copies of this software except as provided in the License Agreement.
- Alter, merge, modify or adapt this software in any way, including disassembling or decompiling or reverse engineering.
- Loan, rent, lease, or sublicense this software or any copy.

This license is effective until terminated. It may be terminated by you by destroying the software media and all copies. It will terminate automatically if you fail to comply with any of the terms of this License Agreement, and on any such termination you will destroy the software media and any back-up copies.

Alliance Laundry Systems retains all rights not expressly granted. Nothing in this License Agreement constitutes a waiver of Alliance Laundry Systems' rights under the U.S. Copyright laws or any other federal or state law.

LIMITED WARRANTY

Alliance Laundry Systems warrants that the software will substantially conform to published specifications and to the documentation, provided that it is used on the computer hardware and with the operating system for which it was designed. Alliance Laundry Systems also warrants that the

documentation are free from defects in materials and workmanship. Alliance Laundry Systems will replace defective media or documentation or correct substantial software errors at no charge, provided you return the item to Alliance Laundry Systems within 90 days of the date of delivery. If Alliance Laundry Systems is unable to replace defective media or documentation or correct substantial software errors, Alliance Laundry Systems will refund the license fee. These are your sole remedies to any breach of warranty. Except as specifically provided above, **Alliance Laundry Systems makes no warranty or representation, either expressed or implied, with respect to this software or documentation, including their quality, performance, merchantability, or fitness for a particular purpose.**

Because software is inherently complex and may not be completely free of errors, you are advised to verify your work. **In no event will Alliance Laundry Systems be liable for direct, indirect, special, incidental, or consequential damages arising out of the use or inability to use the software or documentation license.**

The warranty and remedies set forth above are exclusive and in lieu of all others, oral or written, express or implied.

No Alliance Laundry Systems dealer, distributor, agent or employee is authorized to make any modification or addition to this warranty.

Some states do not allow the exclusion or limitation of implied warranties or limitation of liability for incidental or consequential damages, so the above limitations or exclusions may not apply to you.

U.S. GOVERNMENT RESTRICTED RIGHTS

The software and documentation included are provided with RESTRICTED AND LIMITED RIGHTS. Use, duplication, or disclosure by the Government is subject to restrictions as set off in FAR § 52.277-14 (June 1987) Alternate III(g)(3)(June 1987), FAR § 52.277-19 (June 1987), or DFARS § 52.277-7013(c)(1)(ii)(June 1988), as applicable, Contractor/Manufacturer is Alliance Laundry Systems LLC, Shepard Street, Ripon, WI 54971.

GENERAL

Should you have any questions concerning this License, write to Software License Agreement, Alliance Laundry Systems LLC, Shepard Street, Ripon, WI 54971.

Table of Contents

<i>License Agreement</i>	2
<i>System Requirements</i>	5
System Requirements (PC)	5
System requirements (PDA)	5
<i>PC Application Installation</i>	6
Disabling User Access Control (UAC) – Windows 7 Operating System Only	6
Disabling User Access Control (UAC) – Microsoft Vista Operating System Only	6
Installation	6
Updating the PC Application	7
Opening the PC Application	7
Understanding the My Machines Structure	7
Adding a Branch or Location	8
Editing a Branch or Location	9
Manual Machine Entry (Coin Software Only)	11
Manually Entering a Machine	11
Adding a Manual Entry Collection	11
Click the OK button.	11
My Presets	12
Adding a Preset	12
Editing a Preset	13
My PDAs	13
Viewing My PDAs	13
PC Application (continued)	14
My User-Defined Types	14
Adding Machine Types	14
Editing Machine Types	15
Assigning a User-Defined Type to a Machine	15
Infrared Communication	16
Tools	17
Receiving Information from the PDA	18
Sending Information to the PDA	18
Reports Menu	18
Help Menu	19
Start Menu Applications	20
<i>PDA Application Installation</i>	21
Windows 7 Operating Systems Only: Using Sync Center	21
Windows XP and Vista Operating Systems Only ActiveSync Installation	21
Installing the PDA Application	21
Updating the PDA Application	21

© Copyright 2012, Alliance Laundry Systems LLC

All rights reserved. No part of the contents of this book may be reproduced or transmitted in any form or by any means without the expressed written consent of the publisher.

Table of Contents

<i>PDA Application</i>	22
Opening the PDA Application	22
Collecting Information from the Machine with the PDA	22
Assigning New Machines to a Location	22
Viewing My Machines	22
Saving a Machine's Programming	23
Manually Entering a Machine's Audit Data	23
Programming the Machine	23
Loading Machine Cycles	23
Loading Preset Cycles	23
Creating a New Preset	23
Editing Cycles	24
Editing Pricing (Only Available For Vended Products)	24
Editing Globals	24
Downloading to Machine	24
Viewing Audit Data	25
Audit Data	25
Machine Info.	25
Mach Config Tab	25
Viewing Machine Configuration	25
Viewing Machine Status	25
Maintenance	26
Setup Configuration	26
<i>Technical Support</i>	27

System Requirements

System Requirements (PC)

The PC Application has the following minimum recommended PC requirements:

- Keyboard and mouse
- Microsoft Windows XP with Service Pack 2
- 1 GHz processor
- 512 Mb RAM
- XGA (1024x768)
- CD or DVD Drive

System requirements (PDA)

The PDA software requires 5 MB of available storage space, depending on the processor and components installed on the PDA.

Operating systems that support the PDA software include the following:

- Microsoft Windows Mobile 2003 or greater
- Infrared communication window (IrDA) or standard SD expansion slot

PC Application Installation

NOTE : If using the Microsoft Windows 7 or Vista operating system, you must disable User Access Control (UAC) before the software is installed.

Disabling User Access Control (UAC) – Windows 7 Operating System Only

1. Open the control panel.
2. Click the **User Accounts and Family Safety** heading.
3. Click the **User Accounts** heading.
4. Click **Change User Account Control settings**.
5. Use the sliding bar tool to drag the icon to **Never notify** and click **OK**.
6. In the User Account Control dialog box, click **Yes**.
7. You will be prompted to restart your computer to apply the change. Do so when you are ready.

Disabling User Access Control (UAC) – Microsoft Vista Operating System Only

1. Open the Control Panel.
2. Under the *User Accounts and Family Safety* heading, click **Add or remove user accounts**.
3. Click one of the accounts.
4. On the account screen, under the *Additional things you can do* heading, click **Go to the main User Accounts page**.
5. Under the *Make changes to your user account* heading, click **Change security settings**.
6. In the *Turn on User Account Control (UAC) to make your computer more secure* section, click **the Use User Account Control (UAC) to help protect your computer** checkbox to deselect it. Click **OK**.
7. You will be prompted to restart your computer to apply the change. Do so when you are ready.

Installation

NOTE: You must have administrator rights to install the PC application

1. Insert the software CD-ROM into your PC's CD/DVD drive.
2. If the installer does NOT automatically start...
 - a. Navigate to the CD drive using "Windows Explorer" or "My Computer".
 - b. Double-click *the Setup.exe* file on the CD.
3. You may be prompted to install additional components onto your PC before the PC Application can be installed (e.g., Crystal Reports for .NET Framework 2.0, Visual C++ Runtime Libraries [x86], .Net Framework 2.0). If you are prompted, review the component's licensing agreement and then click the **Accept** or **Install** button.
4. After the additional components are installed, the installer will start automatically.
5. Follow the on-screen instructions to install the PC Application.
6. After the software has been installed, click the **Close** button. A shortcut for the program is added to the PC's desktop and Start menu.

PC Application Installation (continued)

Updating the PC Application

1. If using a PDA, transfer all data from the PDA to the PC by using the *Receive...* button in the PC application.
2. Make a back-up of the database. Under the PC's *Start* menu, under *All Programs*, locate the Electronic Control Software menu and click **Database Backup**.
3. Uninstall the previous version of the Electronic Control Software.
 - a. From the PC's Control Panel, open the *Add or Remove Programs* utility.
 - b. From the list of currently installed programs, select the Electronic Control Software program and click **Remove**.
4. Insert the CD with the new version of the Electronic Control Software into the PC and follow the on-screen instructions.
5. Locate and double-click the Electronic Control Software shortcut on the PC's desktop. If a database update is required, the Database Setup utility will open. To update the database, click the **Update** button.
6. The new version of the Electronic Control Software will install.

Opening the PC Application

Double-click the application's shortcut on your PC's desktop or, under your PC's start menu, click **All Programs**. Locate and click the software.

NOTE: The first time the PC Application is opened, you will be prompted to enter your Software Security Code and/or install the database server. Follow the on-screen instructions.

Understanding the My Machines Structure

1. The first time the application is open, the default My Machines structure is shown (i.e., My Branch and My Location) in the tree view.

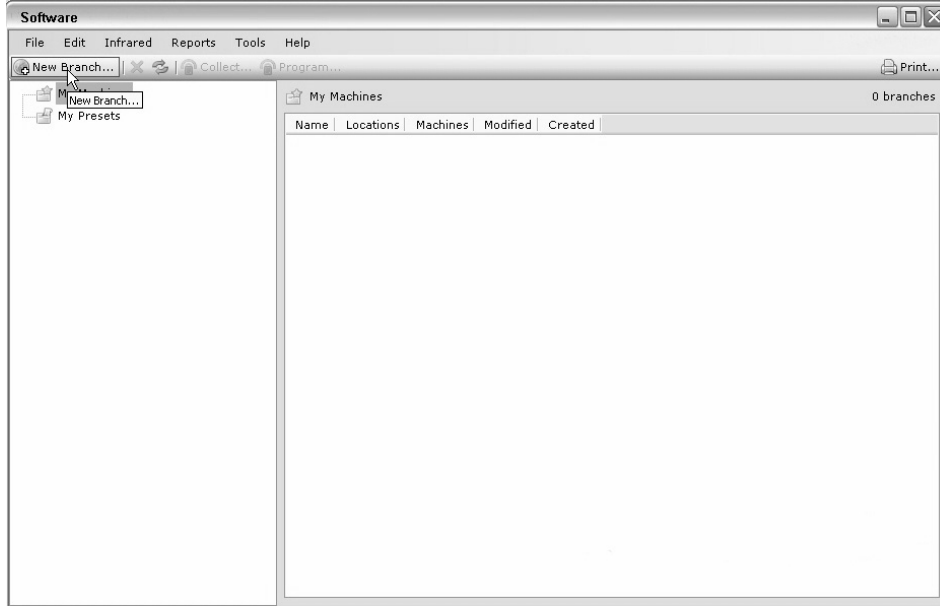
Definition:

- Branch: This is a group of locations (e.g., Campus Laundries).PC Application
- Location: This is the actual physical location of a laundry facility (e.g. North Campus).

PC Application Installation (continued)

Adding a Branch or Location

1. To add a Branch or Location to the My Machines structure, in the My Machines structure, select the level above which you would like to add an item and click the **New...** button.

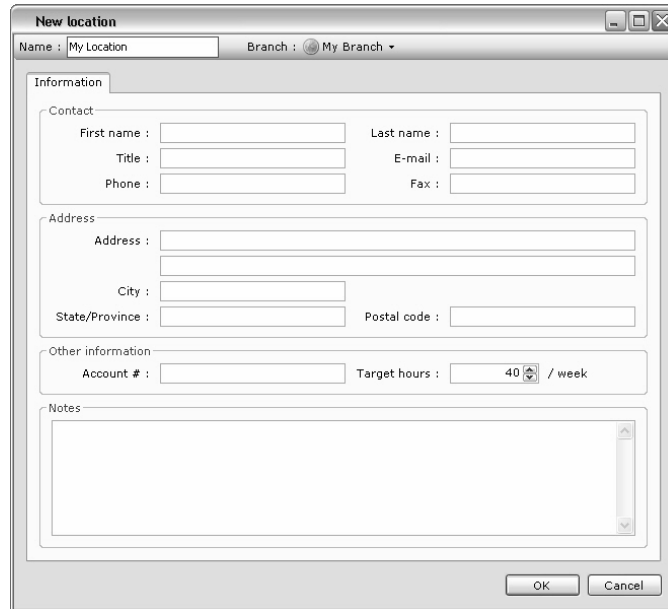


PHM1472R

Figure 1

Example: To add another Location to the My Machines structure,

- a. In the My Machines structure, click **My Branch** (i.e., the level above My Location).
 - b. Click the **New location...** button.
2. The *New location* window opens.



PHM1473R

Figure 2

PC Application Installation (continued)

3. Enter information into the New... window and click the **OK** button.

Example (Location): When adding a new Location, this window can be used to change the Location's Branch and to add information about the Location (e.g., the Location's name, contact information, address and notes).

Example (Branch): If adding a new Branch, in the *New branch* window, the only information that can be added is the Branch's name and notes.

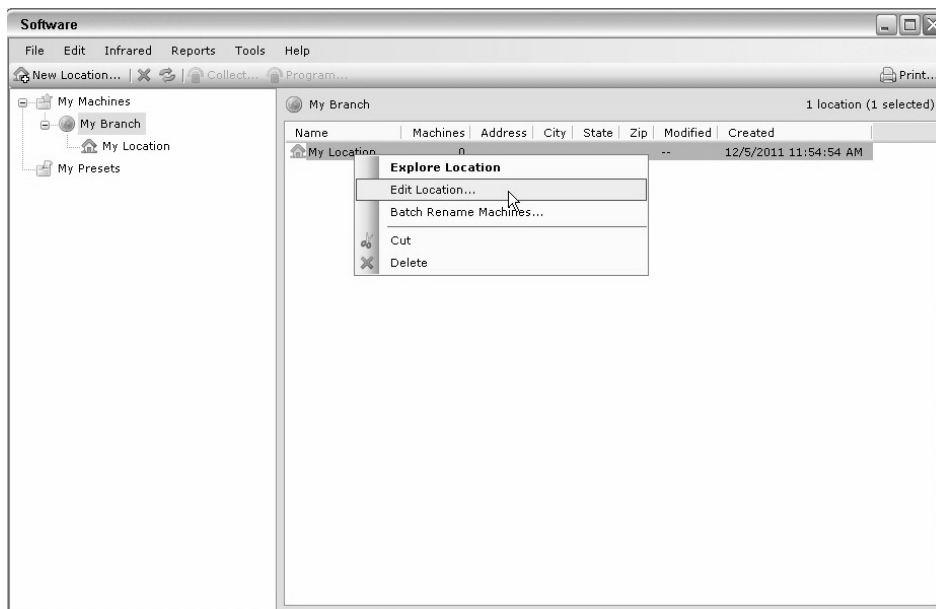
4. The new element is added to the My Machines structure.

Editing a Branch or Location

1. To edit a Branch or Location, in the My Machines structure, right-click the branch or location you would like to edit.

Example: To edit information about My Location, under My Branch, right-click **My Location**.

2. From the pop-up menu, click **Edit Location...** or **Edit Branch...**

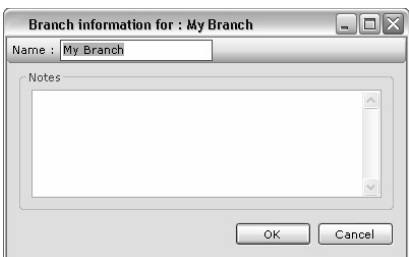


PHM1474R

Figure 3

PC Application Installation (continued)

3. The *...information for ...* window opens.

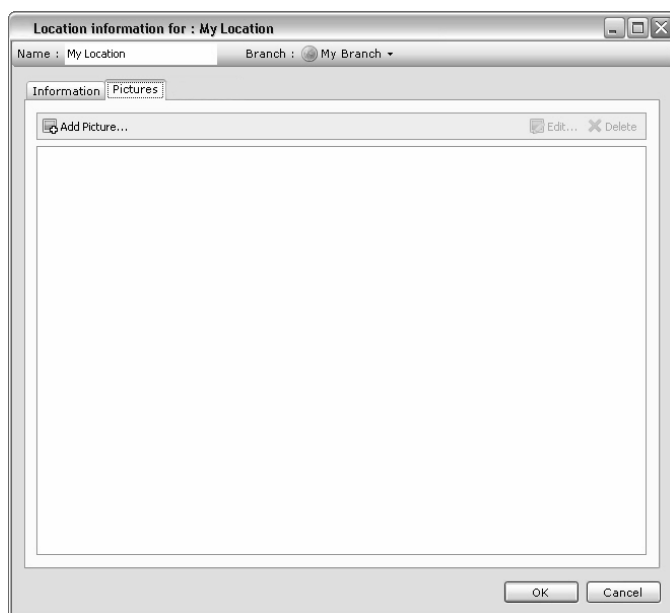


PHM1475R

Figure 4

4. Edit the information for the item as needed and click the **OK** button.

Example (Location): For Locations, the Branch assignment, name, contact information, address and notes can be edited.



PHM1476R

Figure 5

Example (Branch): For Branches, the name and notes can be edited.

PC Application (continued)

Manual Machine Entry (Coin Software Only)

Manual machine entry provides a way to add machines to the tree view manually, without the use of a network or PDA.

Manually Entering a Machine

1. In the tree view, click the location into which you would like to manually enter a machine.
2. Click **New Manual Entry Machine**. The *New manual entry machine* window opens.
3. In the *Name:* textbox, enter the name of the machine.
4. In the *Machine information* section, enter the machine's serial number, model and machine type. Also specify if you would like the machine to use cumulative processing or not.
5. In the *Prices* section, set the cycle, coin and start pulse values.
6. In the *Counters* section, enter information into the necessary textboxes.
7. Click the **OK** button.
8. The machine is added under the location that was selected in the tree view.

Adding a Manual Entry Collection

1. In the tree view, click the location that contains the manual entry machine into which you would like to add a manual entry collection.
2. In the location window, right-click the desired machine.
3. From the pop-up window, click **Add Manual Entry Collection...**. The *Add new manual entry collection* window opens.
4. In the *Counters* section, enter information into the necessary textboxes.

Click the **OK** button.

PC Application (continued)

My Presets

Adding a Preset

1. In the tree view, click **My Presets**.
2. Under the *New Preset* information menu, select the type of preset.

NOTE: The list of presets will vary depending on your version of the software.

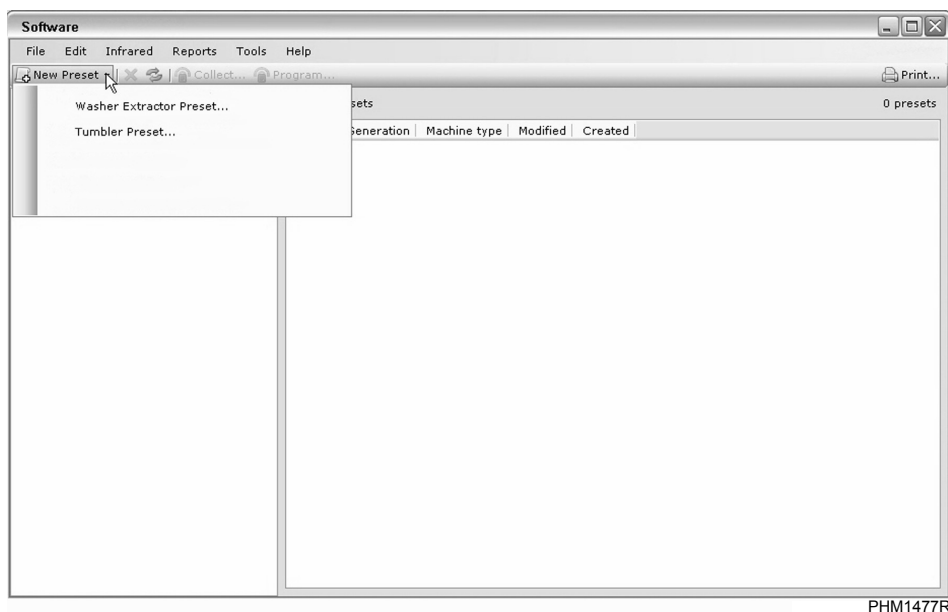


Figure 6

The *New... preset* window opens.

3. In the *Name:* textbox, enter the name of the Preset.
4. Click the **OK** button.

PC Application (continued)

Editing a Preset

1. In the tree view structure, click **My Presets**.
2. From the list of presets, right-click the preset to be edited. From the pop-up menu, click **Edit Preset...**. The *Edit...preset* “...” window opens.

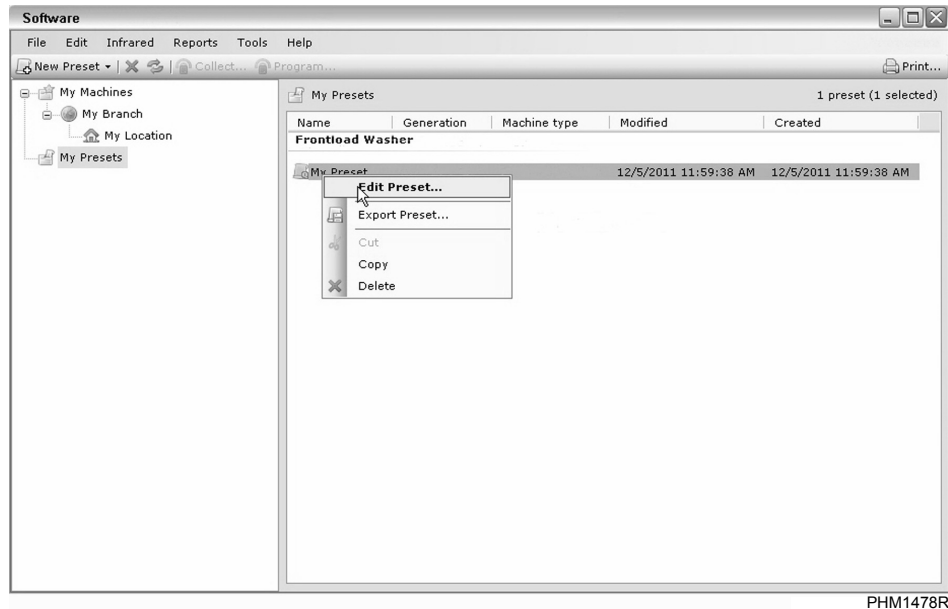


Figure 7

3. Edit the preset.

NOTE: The editable items under each programming tab vary by type of preset.

4. To close the *Edit...preset* “...” window, click the **OK** button (to save the changes) or the **Cancel** button.

My PDAs

My PDAs provides a detailed list of the PDAs that have communicated with the PC. This list includes PDA serial numbers as well as information about the last user of the PDA and shows when the information from the PDA was last downloaded to the PC.

Viewing My PDAs

1. Under the *Tools* menu, click **Options...**. The *Options* window opens.
2. Under the *Application settings* heading, click the **Enable PDA tracking** checkbox.
3. To close the *Options* window, click **OK**. *My PDAs* is displayed in the tree view.

PC Application (continued)

My User-Defined Types

NOTE: If option does not appear on your list, go to tools > Options and place a check mark in the box for that option. Select OK to save.

My User-Defined Types can be used to add additional Machine Types.

Adding Machine Types

1. To add an additional machine type, in the tree view, under *My User-Defined Types*, click the item you would like to add.
2. Click *New ... Type*. A *New ... Type* window opens.
3. Fill in the desired information.
4. Click the **OK** button to close the window and save the changes or the **Cancel** button to close the window without saving the changes.

PC Application (continued)

Editing Machine Types

1. To edit a machine type, in the tree view, under *My User-Defined Types*, click the item you would like to edit.
2. In the ...Types window, right-click the user-defined type you would like to edit. A pop-up window opens.
3. Click *Edit ... Type....*. The *Edit ... type '...'* window opens.
4. Edit the information as needed.
5. Click the **OK** button to close the window and save the changes or the **Cancel** button to close the window without saving the changes.

Assigning a User-Defined Type to a Machine

1. In the tree view, click the location that contains the desired machine.
2. In the location window, right-click the desired machine.
3. From the pop-up menu, mouse-over *User-defined type*.
4. From the sub pop-up menu, click the user-defined type you would like to assign to the machine.

PC Application (continued)

Infrared Communication

NOTE: If option does not appear on your list, go to tools > Options and place a check mark in the box for that option. Select OK to save.

To communicate between the PC and the machine's control make sure the USB device is connected to the PC and select an option from the Infrared menu.

Collect Machine Data...

Collect data from the machine.

After communicating with a new machine for the first time, the machine is added to "Unknown Location." The machine must then be placed into the correct location.

Collect Machine Programming...

Collect programming information from the machine.

Program Machine...

Download, edit and upload presets to the machine.

Rapid Advance...

Rapid advance to a step within a cycle.

*Start Machine (Rapid Advance)...**

Rapid advance to the beginning of a cycle.

*Stop Machine (Rapid Advance)...**

Rapid advance to the end of a cycle.

*Clear Partial Vend...**

If a partial vend has been entered, clear it from the control.

*Pause Washer-Extractor Cycle**

Pause a cycle in progress.

Change Machine Serial Number...

Change the machine serial number stored on the machine's control.

Change Machine Model Number...

Change the model number stored on the machine's control.

*Only applicable to Coin Software.

PC Application (continued)

Manual Programming

Enable or disable manual programming of the machine's control.

Security Code

Enable or disable the security code on the machine.

Synchronize Machine Clock

Change the machine's date and time to match the PC's date and time.

NOTE: Machine's factory default time is set to Central Standard Time.

Reset to Factory Defaults

Reset the machine's control to the factory defaults.

Run Production Test

View information about the machine's control and test some of the machine's components.

*Water Leak Detection Test**

Test for a water leak in the machine's drain.

Tools

Items under the Tools menu include the following:

Export...

Save branches, locations, machine data and presets as a transfer file (.ctf).

NOTE: Presets can be exported individually by right-clicking one or more presets and selecting *Export Preset*.

Import...

Load branches, locations, machine data and presets from a transfer file (.ctf).

Options...

Change the PC software's settings, including application, including database, reports and infrared communication.

*Only applicable for Washer-Extractor.

PC Application (continued)

Receiving Information from the PDA

NOTE: Before installing the Software onto a PDA, make sure that the PDA's ActiveSync software has been installed onto the PC and that the PDA is connected to the PC.

1. Make sure the PDA is connected to the PC.
2. Under the *PDA* menu, click **Receive data from PDA...**
3. Information is sent from the PDA to the PC and is displayed in the My Machines structure.

Sending Information to the PDA

NOTE: Before installing the Software onto a PDA, make sure that the PDA's ActiveSync software has been installed onto the PC and that the PDA is connected to the PC.

1. Make sure the PDA is connected to the PC.
2. Under the *PDA* menu, click **Send data to PDA...**
3. Choose the information to send to the PDA.
4. Information is sent from the PC to the PDA.

Reports Menu

The Reports Menu contains 5 report groups, which are as follows:

General Reports

Includes reports related to machine listing, security, location and presets.

- Machine Listing for "My Machines"
- Machine Setup for "My Machines"
- Location Listings for "My Machines"
- Preset Listing
- Machine Type Listing

PC Application (continued)

Audit Reports

Includes reports detailing the operation, productivity, vending and security of the item highlighted in the tree view.

NOTE: Some reports are only available in the Coin Software.

- Audit Operation for “My Machines”
- Audit Productivity for “My Machines”
- Audit Common Diagnostic for “My Machines”
- Audit Error Diagnostic for “My Machines”
- Audit Total Vending for “My Machines”
- Audit Detailed Vending for “My Machines”
- Audit Additional Vending for “My Machines”
- Audit Turns for “My Machines”
- Audit Special Vend for “My Machines”
- Audit Security for “My Machines”

Lifetime Reports

Offers reports summarizing the operation and error diagnostics over the lifetime of the item highlighted in the tree view.

- Lifetime Operation for “My Machines”
- Lifetime Error Diagnostic for “My Machines”

*Pricing Reports**

Displays the pricing information for every cycle on every machine.

- Pricing Detailed for “My Machines”
- Pricing Overview for “My Machines”
- Pricing Change for “My Machines”

Water Usage Reports

Lists the approximate amount of water each machine uses per cycle.

- Water Usage Detailed for “My Machines”
- Water Usage Overview for “My Machines”

Help Menu

The Help Menu includes the following:

User Instructions...

User Instructions... is a link to a PDF of these user instructions

About...

Click to open a window that shows the software’s version number.

*Only applicable to Coin Software.

PC Application (continued)

Start Menu Applications

Elements of the PC application software (e.g., database setup, database backup and the user instructions) can be accessed through the PC's Start menu.

- Database Setup: Create or update a database by entering the server and database name.
- Database Backup: Allows the database to be backed up or restored.
- User Instructions: Provides a PDF of these user instructions.

PDA Application Installation

Windows 7 Operating Systems Only: Using Sync Center

NOTE: Before installing the Software onto a PDA, make sure that a new sync partnership is set up in Sync Center.

1. Turn on PDA and plug into PC.
2. Click the **Start** button > **All Programs** > **Accessories** > **Sync Center**.
3. On the left menu, select **Set Up new sync partnerships**.
4. Select the name of PDA in list of available sync partnerships.
5. On toolbar, click **Set Up**.
6. Select Sync settings and schedule.
7. Select your device from list of sync partnerships.
8. Select **Sync**.

NOTE: Before installing the Software onto a PDA, make sure that the PDA's ActiveSync software has been installed onto the PC and that the PDA is connected to the PC.

Windows XP and Vista Operating Systems Only ActiveSync Installation

1. Insert the CD supplied with your PDA into your computer's CD-ROM drive and follow the on-screen instructions.
2. If a CD wasn't supplied with your PDA, navigate to the *ActiveSync4.5* folder on the computer software CD, double-click the **ActiveSync4.5setup.msi** file and follow the on-screen instructions.
3. As an alternative, navigate to the following web page, connect your PDA to your computer and follow the on-screen instructions:
<http://www.microsoft.com/windowsmobile/en-us/help/synchronize/activesync-download.msp>

Installing the PDA Application

1. Open the PC Application by double-clicking the icon on your PC's desktop or by selecting the program from your PC's Start menu.
2. Under the *PDA* menu, click **Install PDA Application**.
3. Follow the on-screen instructions to install the PDA Application.

NOTE: If PDA menu is not present, select *Tools/Options* on *Application Tab* and check *Show PDA Menu Items*.

Updating the PDA Application

1. Update the PC Application as explained in the *Updating the PC Application* section.
2. Start the PC Software by double-clicking the shortcut on the PC's desktop.
3. Under the *PDA* menu, click **Install PDA Application....**
 - a. Skip steps 1 through 3
 - b. Complete *Step 4: Install Software Application*
 - c. Complete *Step 5: Transfer Software Key*
 - d. Complete *Step 6: Transfer Application Data to PDA*

PDA Application

Opening the PDA Application

1. From the *Start* menu, press **Programs**.
2. From the *Programs* screen, select the program.

Collecting Information from the Machine with the PDA

1. From the home screen, press **Collect**. The *Collection Options* screen appears.
2. Press **Collect Machine Audit**. The *Collect Machine* screen appears.
3. Aim the PDA at the infrared communication window on the machine's control. Press **OK**. The machine's data is uploaded from the machine's control to the PDA. The *My Machine* screen is displayed if the machine has not been placed into a valid location.

Assigning New Machines to a Location

1. The new machine will appear in *Unknown Location*.
2. Create a new location if needed or use an existing location. Refer to *Adding a Branch or Location* in the *PC Application* section.
3. Press and hold the machine's serial number on the screen. A pop-up window will appear.
4. Select **Cut** and then press and hold the new location.
5. Select **Paste** to put it into the new location.
6. Close *My Machines* window.
7. Continue collecting from other machines. All the machines that are collected that don't have a location will be automatically moved to this new location.
8. To exit the auto location function, close the collection window.

Viewing My Machines

1. From the home screen, press **Collect**. The *Collection Options* screen appears.
2. Press **My Machines**. The *My Machine* screen appears. Refer to the *Understanding the My Machines Structure* section in this guide.

NOTE: Press and hold down on a machine until menu appears. Press *View Audit* to see audit data from the last collection, if available.

3. Press the **Close** button.

PDA Application (Continued)

Saving a Machine's Programming

1. From the home screen, press **Collect**. The *Collection Options* screen appears.
2. Press **Save Machine Programming**. The *Communications* screen appears.
3. Aim the PDA at the infrared communication window on the machine's control. Press **OK**. The machine's data is uploaded from the machine's control to the PDA. The *Collection Options* screen is displayed.

Manually Entering a Machine's Audit Data

1. From the home screen, press **Collect**. The *Collection Options* screen appears.
2. Press **Manual Entry**. The *Select Machine* screen appears.
3. To add the programming for a new machine, press the **New Machine** button. The *Machine Information* screen appears.
4. Enter the machine's serial number, model number and select its machine type. Press the **Counters** tab to manually enter the machine's counters or the **Prices** tab to change the machine's vend, coin or start pulse values.
5. To save the machine information, press **Save**. The *Collection Options* screen appears.

NOTE: The total counter values can only be viewed by sending the data to the PC.

Programming the Machine

1. From the home screen, press **Program**. The *Programming Options* screen appears.

Loading Machine Cycles

1. To upload and edit cycles from the machine, from the *Programming Options* menu, press **Load From Machine**. The *Communications* screen appears.
2. Aim the PDA at the infrared communication window on the machine's control. Press **OK**. The *Programming Options* screen appears with a note at the bottom that states "... Programming Loaded".

Loading Preset Cycles

1. To load preset cycles, from the *Programming Options* menu, press **Load From Presets**.
2. Select the type of preset to be loaded. Press **OK**.

Creating a New Preset

1. To create a new preset, from the *File* menu, press **New Preset**.
2. To edit or save the preset, press **Edit Machine Programming** (see the *Editing Cycles* section).
3. To save the new preset to the database, under the *File* menu, press **Save**.

PDA Application (Continued)

Editing Cycles

1. To edit the cycles, from the *Programming Options* menu, press **Edit Machine Programming**. The *Programming* screen appears.
2. From the *Programming* screen, press **Cycles**. The *Edit Cycles* screen is displayed. Some models list cycles as soon as *Edit Machine Programming* is selected. Press cycle that needs to be updated.
3. From the cycle type drop-down lists, select the cycle type to be edited. Press and hold down on cycle display's menu to show water usage data or to copy cycle. Cycle can then be pasted to any other cycle.
4. From the stage drop-down list, select the stage to be edited.
5. Edit the cycle's stage.

NOTE: The available programming tabs will vary by machine type.

6. To exit to *Edit Cycles* screen, press **Save**.

Editing Pricing (Only Available For Vended Products)

1. To edit the cycle's pricing, from the *Programming Options* menu, press **Edit Machine Programming**. The *Programming* screen appears.
2. From the *Programming* screen, press **Pricing**. The *Pricing* screen is displayed.
3. Edit the pricing information.

NOTE: The available pricing tabs will vary by machine type.

4. To exit to *Pricing* screen, press **SAVE**.

Editing Globals

1. To edit the global settings, from the *Programming Options* menu, press **Edit Machine Programming**. The *Programming* screen appears.
2. From the *Programming* screen, press **Globals**. The *Global Settings* screen is displayed.
3. Edit the global settings.

NOTE: The available tabs will vary by machine type.

4. To exit to *Global Settings* screen, press **SAVE**.

Downloading to Machine

1. To download edited cycles from the PDA to the machine, from the *Programming Options* menu, press **Download to Machine**. The *Communications* screen appears.
2. Aim the PDA at the infrared communication window on the machine's control. Press **OK**.

PDA Application (Continued)

Viewing Audit Data

1. From the home screen, press **Machine Details**. The *Machine Details* screen appears
2. From the *Machine Details* menu, press **View Audit Data**. The *Communications* screen appears.
3. Aim the PDA at the infrared communication window on the machine's control. Press **OK**. The *View Machine Data* screen is displayed.

Audit Data

Press the *Select Audit Data* tab. From the *Select Audit Data* drop-down list, select a report. For example, to view the Cycle Related Audit report, from the *Select Audit Data* drop-down list, select *Cycle Related Audit*. The Cycle Related Audit report is displayed.

Machine Info.

Press the *Machine Info.* tab. The machine's model number, serial number, installation date, control serial number, control version number, output board number, node number and trim value are displayed.

Mach Config Tab

Press the *Mach Config* tab. The machine's control configuration information is displayed.

4. To save the machine's data into a text file, press **Create File**. The file is stored in My Documents\... Files.

Viewing Machine Configuration

1. From the *Machine Details* menu, press **View Machine Config**. The *Communications* screen appears.
2. Aim the PDA at the infrared communication window on the machine's control. Press **OK**. The *View Machine Data* screen is displayed with the *Mach Config* tab selected. The machine's control configuration information is displayed.
3. To save the control configuration information into a text file, press **Create File**.

Viewing Machine Status

1. From the *Machine Details* menu, press **View Machine Status**. The *Communications* screen appears.
2. Aim the PDA at the infrared communication window on the machine's control. Press **OK**. The *View Machine Data* screen is displayed with the *Mach Status* tab selected. The status of the cycle in process on the machine is displayed.
3. To save the control status information into a text file, press **Create File**.

PDA Application (Continued)

Maintenance

1. From the home screen, press **Maintenance**. The *Maintenance* screen appears.
2. From the *Maintenance Options* menu, select an item. The menu includes items related to machine setup and troubleshooting.

Setup Configuration

1. From the home screen, press **Help**. The *Help* menu appears.
2. Press **Setup Config**. The *Configuration Setup* screen appears.
 - a. To change how the PDA uses the infrared port, from the *Comm Port* drop-down list, select a different port OR press Scan for Port to have the PDA select a port.
 - b. To change speed at which the PDA communicates with the control, from the Baud Rate drop-down list, select a different option.
 - c. To save the configuration setup changes, press **Save**.
 - d. Press the **Misc.** tab to deselect “*Show Unknown Location Machines*” or “*Enforce Strict Programming Rules*”.
3. To view information about the last import or to manually import data from another device, press **Import Log**.
4. To view information about the last export or to manually export data to another device or for emailing, press **Export Log**.

Technical Support

If service is required, contact the nearest Authorized Service Center. To find the nearest service center, visit us online at www.comlaundry.com.

If you are unable to locate an authorized service center contact:

Alliance Laundry Systems LLC
Shepard Street
P.O. Box 990
Ripon, Wisconsin 54971-0990
www.comlaundry.com
Phone: (920) 748-3121

Please have the following information available when you call.

Date Purchased _____
Software Name _____
Software Version _____
PC Operating System _____
PDA Operating System _____